

B583 STAMPED SHAKER

PERSONALIZING OPTIONS

GOOD / **BETTER** / BEST

COLORS¹

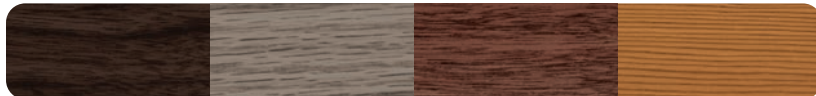


White Almond Sandstone Brown Bronze



Gray Desert Tan Black Graphite

ACCENTS WOODTONES¹



Walnut Driftwood Mahogany Cedar



Dark Oak Natural Oak Carbon Oak

OVERSIZED⁴ WINDOW INSERTS



No Inserts Stockton Arched Stockton



Cascade Madison Arched Madison

GLASS Plain available as non-insulated Polycarbonate



Plain Frosted Tinted Obscure Glue Chip Seeded

DESIGNER GLASS



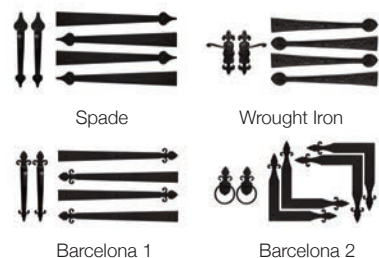
Newport Hampton



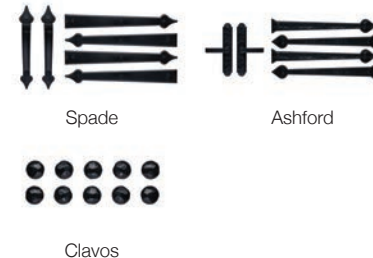
Florence LaSalle *not available in 18in. sections*

EXTERIOR HARDWARE

Permanent



Magnetic



Specifications

| | |
|-------------------------------|---|
| Panel Style | Shaker |
| Section Construction | 2in. Thick - 2-Sided Steel |
| Section Material | Medium Duty / 27 ² Ga. Steel |
| Insulation Type | Polystyrene |
| R-value / Thermal Performance | R-9.65 |
| Window Style ³ | Oversized ⁴ [42in. x 15in.] |
| Glass | Insulated and Non-Insulated |
| Wind Load | Non-Impact and Impact Rated |
| Warranty | Limited Lifetime on Sections 3 Years on Springs 6 Years on Hardware |



¹ Refer to your local Dealer for exact color and woodtones match. ² Lower steel gauge [ga.] number indicates stronger steel. ³ Model number indicates window style. ⁴ Long [40.5in. x 12.75in.] windows will be substituted in doors with windows in 18in. sections.

Your Local Garage Door Professional

dacenterprise.com
1177 Markley Dr. | Plymouth, IN 46563 | USA

